

C
ARCHIT
832:

So
Prep
72
PA
LMD

Tag	Qty	Product	Len	Cut Logic
EA				
EA	4 EA	Count CT-01 SCR3601		
LF	21 LF	Base PCT-02 Cove R/L		
LF	195 LF	Base Rub-B1 R/L		
LF	195 LF	Adhsv RB R/L		
LF	147 LF	Base CT-01 Cove R/L		
SF	8,983 SF	SealdCnrcr Conc(Pol)		
SF	1,001 SF	Adhsv RB		
SF	1,020 SF	RbbrFlr RUB-01		
SF	35 SF	Flr Tile PCT-02		
SF	34 SF	Thinset Premium		
SF	34 SF	UndrLymnt CrckIsoltn		
SF	449 SF	Flr Tile PCT-01		
SF	440 SF	Thinset Premium		
SF	440 SF	UndrLymnt CrckIsoltn		
SF	45 SF	Adhsv VCT		
SF	46 SF	VinylFlr VCT(SC)		
SF	87 SF	SealdCnrcr Conc(S)		

De
6
M

No. 1
DRAWN BY
GD/JG
DATE
11/11/2015
KEY PLAN

SEAL/SIG

Somerset Academy PSL
725 NW California Blvd
Port St. Lucie, Florida 34986

A101 1stFlrInCllsRm Bldg C

Estimator: -Estimator-
Tracking: -Tracking-



Somerset College
Preparatory Academy
PHASE 3

725 NW CALIFORNIA BLVD
PORT ST LUCIE, FL 34986
http://www.cpatc.org
PARCEL ID 3323-003-001-00-0
LMD Conceptual Site Plan P14-120
Site Plan P14-087



APPLICANT:
PSL School
Development LLC
6340 Sunset Dr.
Miami, FL 33143

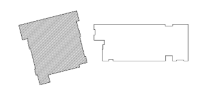
CIVICA PROJECT No:
190104

ISSUED FOR:

PERMIT
SET

No.	DATE	REVISION	BY

DRAWN BY: APPROVED BY:
GD/JG JG/RL
DATE: SCALE:
11/11/2019 AS SHOWN
KEY PLAN



SEAL/SIGNATURE

ROLANDO LLANES, RA. AIA
AR - 0013160

This drawing is the property of CIVICA and is not to be reproduced or copied in whole or part. It is not to be used on any other project and is to be returned on request.
© 2019 CIVICA

SHEET TITLE
**1ST FLOOR
PLAN**

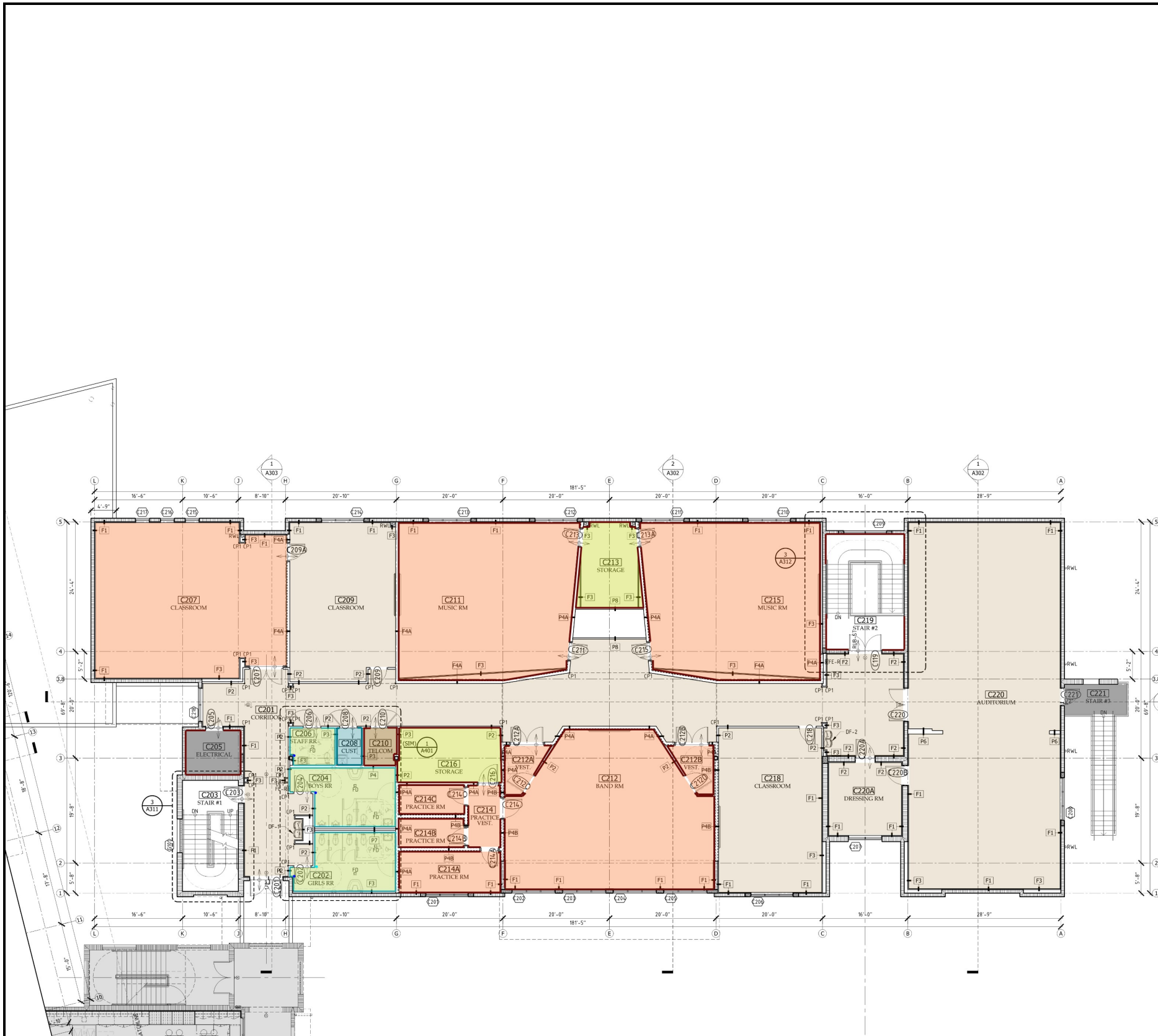
Tag	Qty	Product	Len	Cut Logic
EA				
EA	12 EA	Count CT-01 SCL3601		
EA	9 EA	Count CT-01 SCR3601		
LF				
LF	88 LF	Base Rub-B1 R/L		
LF	88 LF	Adhsv RB R/L		
LF	281 LF	Base CT-01 Cove R/L		
SF				
SF	191 SF	Adhsv CRPT		
SF	195 SF	CrptFir ES-2		
SF	1,361 SF	SealdCnrcr Conc(Pol)		
SF	327 SF	Adhsv LVT VaporBarrier		
SF	333 SF	VinylFir LVT-1		
SF	199 SF	Adhsv CRPT		
SF	203 SF	CrptFir ES-1		
SF	1,110 SF	Fir Tile PCT-01		
SF	1,089 SF	Thinset Premium		
SF	1,089 SF	UndrLymnt Cracksoltn		
SF	21 SF	SealdCnrcr Conc(S)		

Somerset Academy PSL
725 NW California Blvd
Port St. Lucie, Florida 34986

A102 1stFlrInClsRm Bldg D

Estimator: -Estimator-

Tracking: -Tracking-



CIVIC
 ARCHITECTURE & DESIGN
 8323 NW 12th St, Suite 11
 Doral, FL 33126
 tel: 305.593.9959
 info@civicgroup.com
 www.civicgroup.com
 AA #26601093

PROJECT:
 Somerset Colleg
 Preparatory Acade
 PHASE 3
 725 NW CALIFORNIA BLVD
 PORT ST LUCIE, FL 34986
 http://www.cptic.org
 PARCEL ID 3323-903-8031-00-4
 LMD Conceptual Site Plan: P14-1
 Site Plan: P14-087



APPLICANT:
 PSL School
 Development LL
 6340 Sunset Dr.
 Miami, FL 33142

CIVICA PROJECT No:
 190104
 ISSUED FOR:

PERMIT
 SET

No.	DATE	REVISION

DRAWN BY: GD/JG
 DATE: 11/11/2019
 KEY PLAN

APPROVED BY: JG/RL
 SCALE: AS SHOWN

SEAL/SIGNATURE

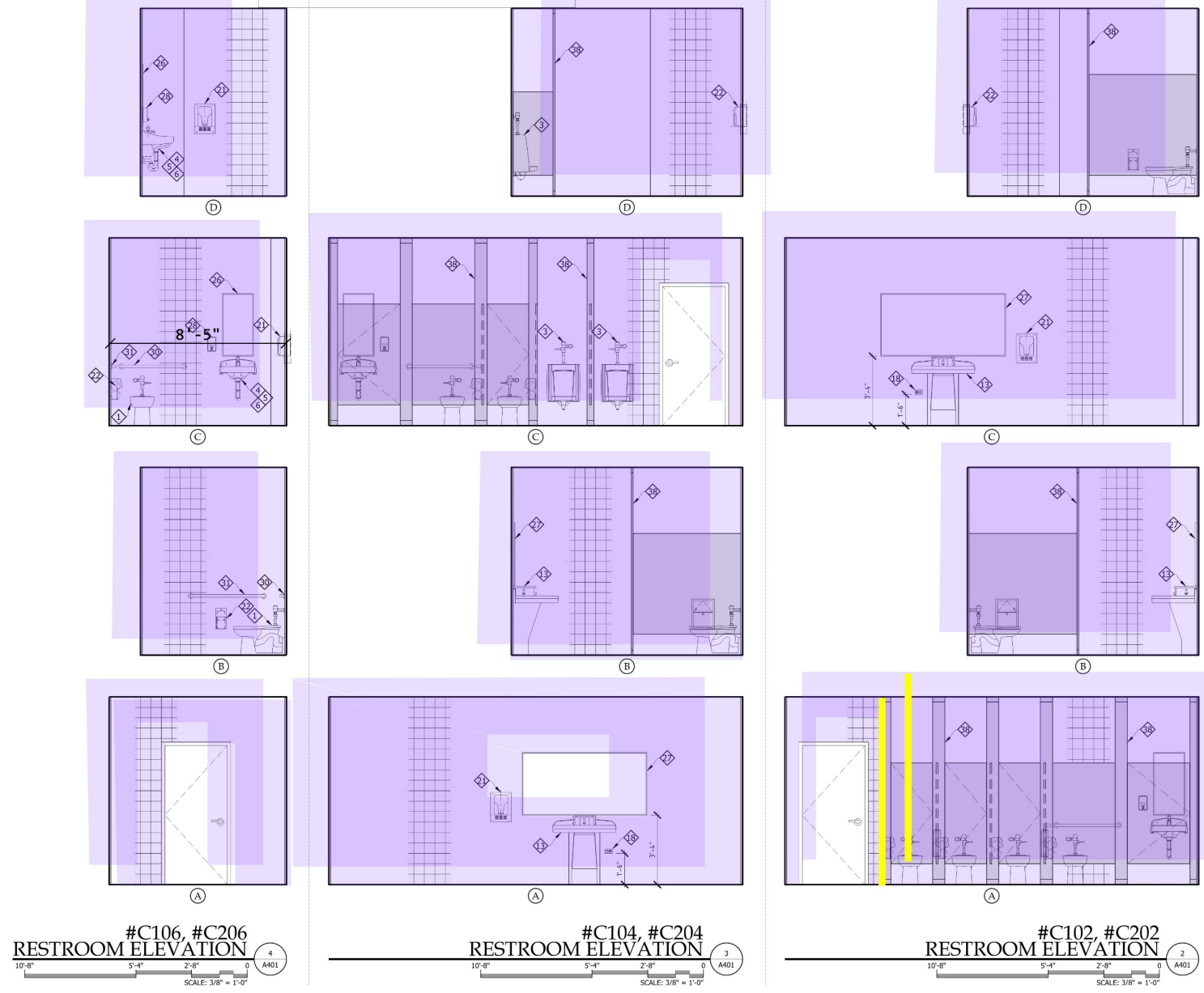
Tag	Qty	Product	Len	Cut Logic
EA				
EA	3 EA	Count CT-01 SCL3601		
EA	1 EA	Count CT-01 SCR3601		
LF				
LF	21 LF	Base PCT-02 Cove R/L		
LF				
LF	750 LF	Base Rub-B1 R/L		
LF	750 LF	Adhsv RB R/L		
LF				
LF	150 LF	Base CT-01 Cove R/L		
SF				
SF	5,157 SF	SealdCnrcr Conc(Pol)		
SF				
SF	34 SF	Fir Tile PCT-02		
SF	33 SF	Thinset Premium		
SF	33 SF	UndrLymnt Cracksoltn		
SF				
SF	4,472 SF	Adhsv CRPT		
SF	4,559 SF	CrptFir CPT-01		
SF				
SF	380 SF	Adhsv LVT VaporBarrier		
SF	387 SF	VinylFir LVT-1		
SF				
SF	446 SF	Fir Tile PCT-01		
SF	437 SF	Thinset Premium		
SF	437 SF	UndrLymnt Cracksoltn		
SF				
SF	45 SF	Adhsv VCT		
SF	46 SF	VinylFir VCT(SC)		
SF				
SF	154 SF	SealdCnrcr Conc(S)		

Somerset Academy PSL
 725 NW California Blvd
 Port St. Lucie, Florida 34986

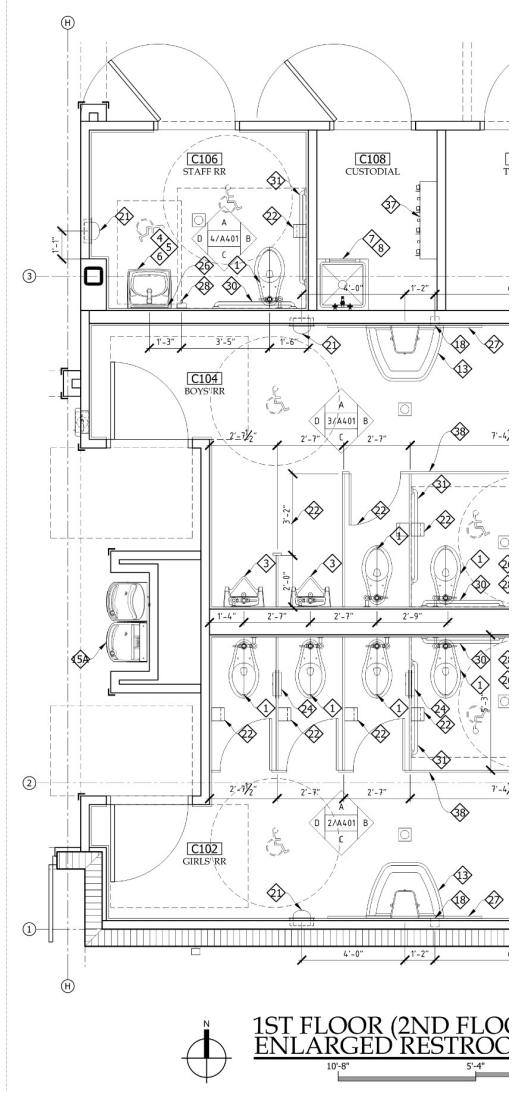
A103 2ndFlrInGym Bldg C

Tag	Qty	Product	Len	Cut Logic
LF				
	18 LF	Schltr Schltr R/L		
SF				
	2,693 SF	Adhsv WallTileMastic		
	2,797 SF	WallTile CT-1		

This page is doubled



34	CLOTHES HOOK & SHELF	13	WASHFOUNTAIN
35	SHOWER CURTAIN ROD W/ CURTAIN	14	WASHFOUNTAIN
36	SHOWER SEAT, FOLDING	15A	WATER COOLER
37	CUSTODIAL SHELF W/ HOOKS	15B	WATER COOLER
38	TOILET PARTITION	16	COUNTERTOP S
		17	COUNTERTOP S
		18	WALL HYDRAN
		19	WALL HYDRAN
		20	NOT USED



Somerset Academy PSL
 725 NW California Blvd
 Port St. Lucie, Florida 34986

A401 IntrElevtnRestRm Bldg C

Estimator: -Estimator-
 Tracking: -Tracking-

Tag	Qty	Product	Len	Cut Logic
EA				
	2 EA	Count Schluter Cmr		
LF				
	61 LF	Schltr Schltr R/L		
SF				
	894 SF	Adhsv WallTileMastic		
	928 SF	WallTile CT-1		

KEY	KEY
DESCRIPTION	DESCRIPTION
21 HAND DRYER AUTOMATIC SURFACE MOUNT	1 TOILET FLOOR MOUNTED
22 TOILET TISSUE DISPENSER	2 NOT USED
23 PAPER TOWEL DISPENSER AUTOMATIC	3 URINAL WALL
24 SANITARY NAPKIN DISPOSAL BIN	4 LAVATORY WALL HINGE
25 SANITARY NAPKIN DISPOSAL SINGLE	5 LAVATORY FAUCET
26 18"X36" MIRROR FRAMED, SECURITY	6 LAVATORY SUPPORT
27 77"X36" MIRROR FRAMED, SECURITY	7 SERVICE SINK
28 LIQUID SOAP DISPENSER	8 SERVICE SINK FAUCET
29 GRAB BAR 24"	9 SHOWER
30 GRAB BAR 36"	10 SHOWER RECEPTACLE
31 GRAB BAR 42"	11 SHOWER TUB
32 GRAB BAR 36"X24"	12 SHOWER RECEPTACLE ADA
33 GRAB BAR SHOWER (8"X18")	13 WASHPOINT - 3 STATION
34 CLOTHES HOOK & SHELF	14 WASHPOINT - 4 STATION
35 SHOWER CURTAIN ROD w/ CURTAIN	15A WATER COOLER INTERIOR (P-1)
36 SHOWER SEAT, FOLDING	15B WATER COOLER INTERIOR (P-2)
37 COSTUME SHELF w/ HOOKS	16 COUNTERTOP SINK
38 TOILET PARTITION	17 COUNTERTOP SINK
	18 WALL HYDRANT INTERIOR
	19 WALL HYDRANT EXTERIOR
	20 NOT USED

CIVICA
ARCHITECTURE & URBAN DESIGN
8323 NW 12th St. Suite 106
Doral, FL 33126
Tel: 305.593.9959
info@civicagroup.com
www.civicagroup.com
AA #26002093

PROJECT:
Somerset College Preparatory Academy PHASE 3
725 NW CALIFORNIA BLVD
PORT ST LUCIE, FL 34986
http://www.somerset.org
PARCEL ID 3325-063-003-00-9
LMD Conveyance File #14-120
Site Plan #14-007

APPLICANT:
PSL School Development LLC
6340 Sunset Dr.
Miami, FL 33143

CIVICA PROJECT No:
190104

ISSUED FOR:
PERMIT SET

No.	DATE	REVISION	BY

DRAWN BY: JG/JG
DATE: 10/11/2019
KEY PLAN

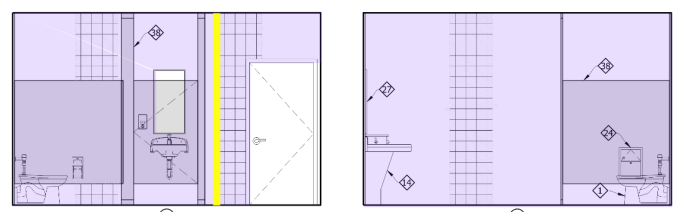
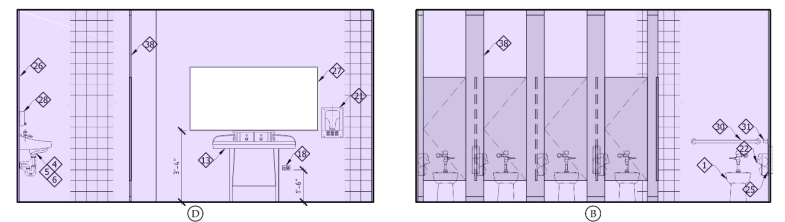
APPROVED BY: JG/RL
SCALE: AS SHOWN

SEALED SIGNATURE

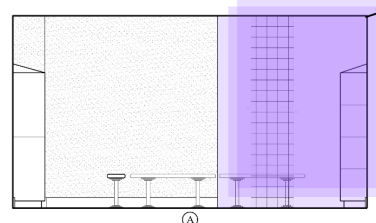
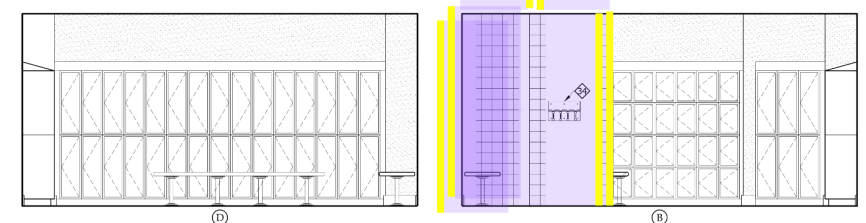
ROLANDO LLANES, RA, AIA
AR - 0033160
This drawing is the property of CIVICA and is not to be reproduced or copied in whole or part. It is not to be used on any other project and is to be returned on request.

SHEET TITLE
INTERIOR ELEVATIONS: BUILDING 'D' RESTROOMS

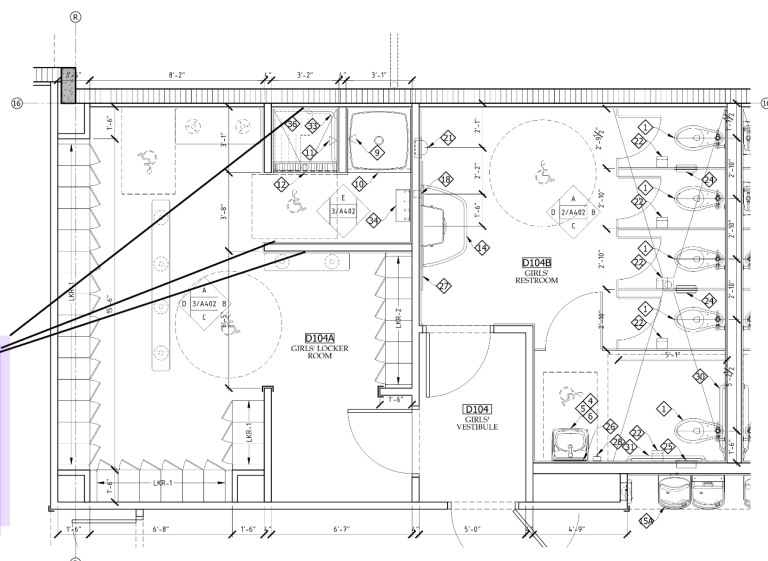
SHEET NUMBER
A402



#D104B
RESTROOM ELEVATION
SCALE: 3/8" = 1'-0"



#D104A
LOCKER ROOM ELEVATION
SCALE: 3/8" = 1'-0"



#D104A & #D104B
ENLARGED PLAN
SCALE: 3/8" = 1'-0"

Somerset Academy PSL
725 NW California Blvd
Port St. Lucie, Florida 34986

A402 IntrElevtnRestRm Bldg D

Tag	Qty	Product	Len	Cut Logic
EA				
	2 EA	Count Schluter Cmr		
LF				
	67 LF	Schltr Schltr R/L		
SF				
	897 SF	Adhsv WallTileMastic		
	931 SF	WallTile CT-1		

KEY	KEY
DESCRIPTION	DESCRIPTION
21 HAND DRYER AUTOMATIC SURFACE MOUNT	1 TOILET FLOOR MOUNTED
22 TOILET TISSUE DISPENSER	2 NOT USED
23 PAPER TOWEL DISPENSER AUTOMATIC	3 URINAL WALL
24 SANITARY NAPKIN DISPOSAL, OVER	4 LAVATORY WALL HINGE
25 SANITARY NAPKIN DISPOSAL, UNDER	5 LAVATORY FAUCET
26 8"X10" MIRROR FRAMED, SECURITY	6 LAVATORY SUPPORT
27 12"X18" MIRROR FRAMED, SECURITY	7 SERVICE SINK
28 LIQUID SOAP DISPENSER	8 SERVICE SINK FAUCET
29 GRAB BAR 24"	9 SHOWER
30 GRAB BAR 36"	10 SHOWER RECEPTACLE
31 GRAB BAR 42"	11 SHOWER LEGAL
32 GRAB BAR 36"X24"	12 SHOWER RECEPTACLE ADA
33 GRAB BAR SHOWER 18"X30"	13 WASHFOUNTAIN - 3 STATION
34 CLOTHES HOOK & SHELF	14 WASHFOUNTAIN - 4 STATION
35 SHOWER CURTAIN ROD W/ CURTAIN	15A WATER COOLER INTERIOR (SP. II)
36 SHOWER SEAT, FOLDING	15B WATER COOLER INTERIOR (SP. II)
37 CUSTODIAL SHELF W/ HOOKS	16 COUNTERTOP SINK
38 TOILET PARTITION	17 COUNTERTOP SINK
	18 WALL HYDRANT INTERIOR
	19 WALL HYDRANT EXTERIOR
	20 NOT USED

CIVICA
ARCHITECTURE & DESIGN
8323 NW 12th St. Suite 106
Doral, FL 33126
tel: 305.593.9959
info@civicagroup.com
www.civicagroup.com
AA #26601093

PROJECT:
**Somerset College
Preparatory Academy
PHASE 3**

725 NW CALIFORNIA BLVD
PORT ST LUCIE, FL 34986
http://www.opcsd.org
PARCEL ID 3323-963-0033-00-9
LMD Conveyed Title Plan P14-120
Site Plan P14-087

APPLICANT:
PSL School
Development LLC
6340 Sunset Dr.
Miami, FL 33143

CIVICA PROJECT No:
190104

ISSUED FOR:
PERMIT
SET

NO.	DATE	REVISION	BY

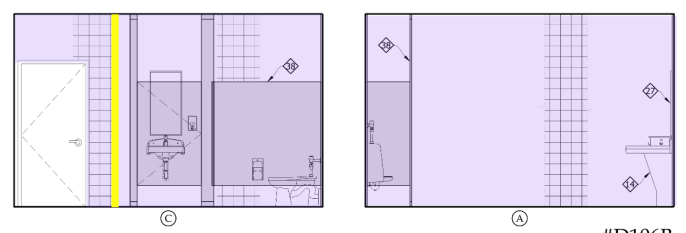
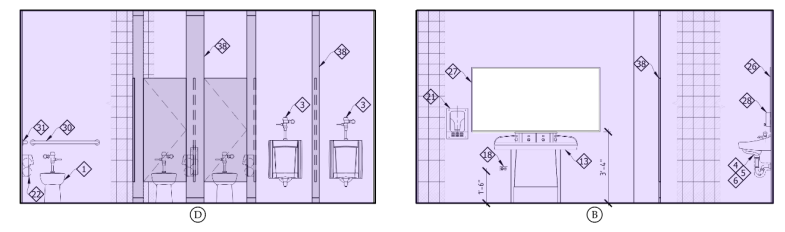
DRAWN BY: GDI/JG
APPROVED BY: JS/RL
DATE: 11/11/2019
SCALE: AS SHOWN
KEY PLAN

SEAL/SIGNATURE

ROLANDO LLANES, RA, AIA
AR - 0813160
This drawing is the property of CIVICA and is not to be reproduced or copied in whole or part. It is not to be used on any other project and is to be returned on request.
Copyright © 2019

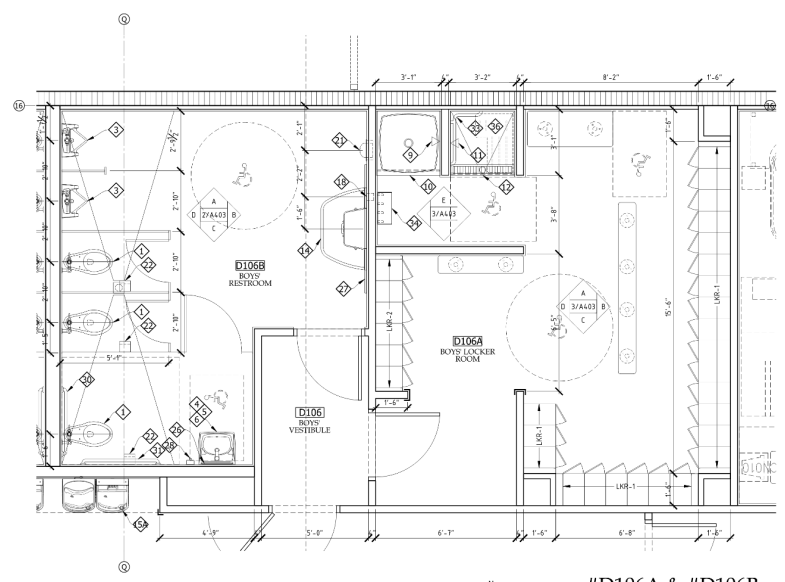
SHEET TITLE
**INTERIOR
ELEVATIONS:
BUILDING 'D'
RESTROOMS**

SHEET NUMBER
A403

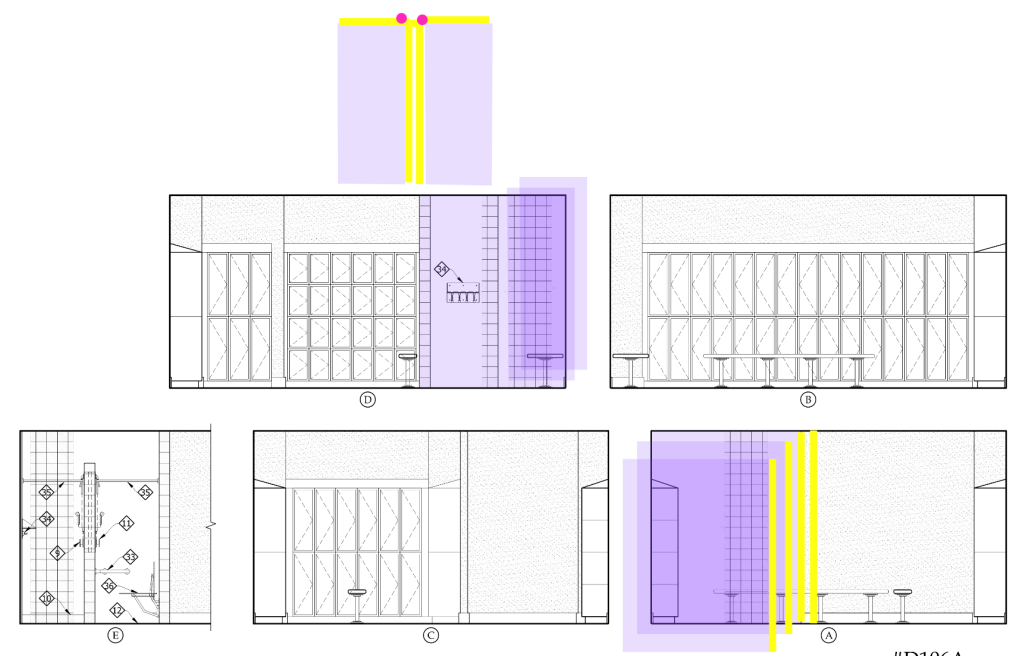


#D106B
RESTROOM ELEVATION
SCALE: 3/8" = 1'-0"

#D106A
LOCKER ROOM ELEVATION
SCALE: 3/8" = 1'-0"



#D106A & #D106B
ENLARGED PLAN
SCALE: 3/8" = 1'-0"

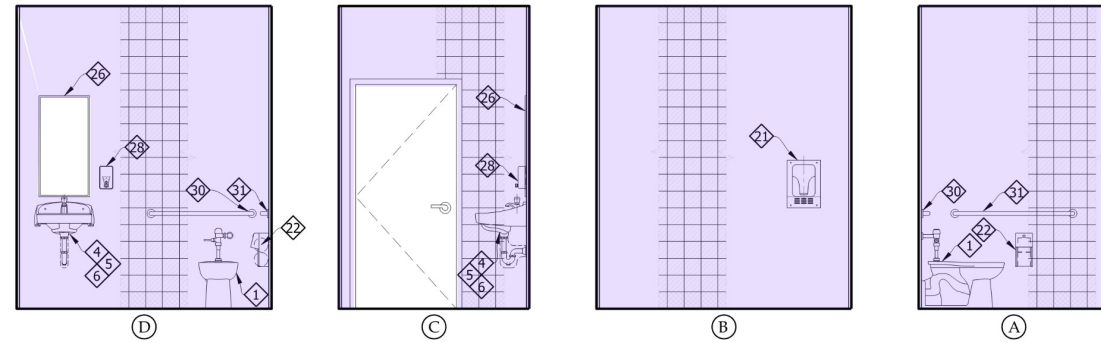


Somerset Academy PSL
725 NW California Blvd
Port St. Lucie, Florida 34986

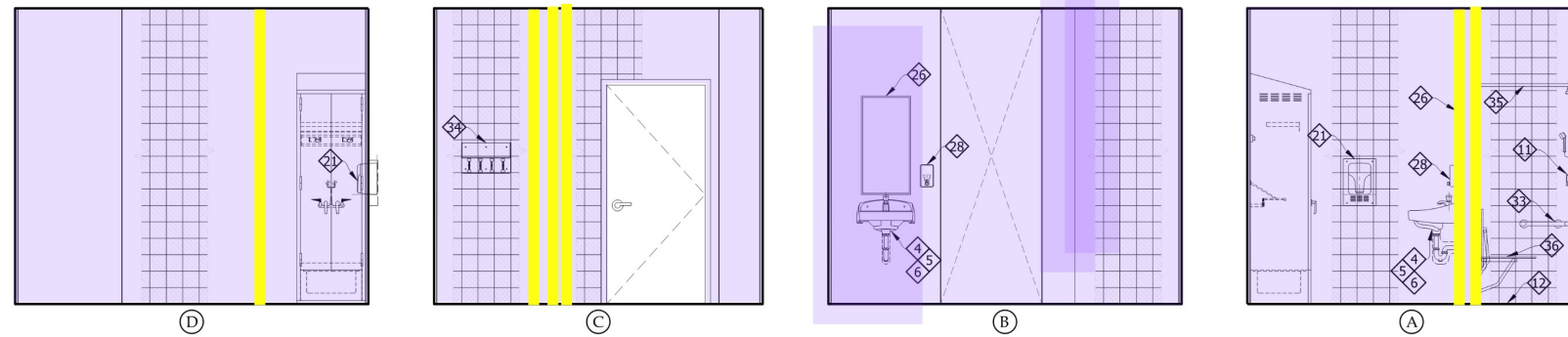
A403 IntrElevtnRestRm Bldg D

Estimator: -Estimator-
Tracking: -Tracking-

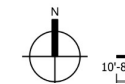
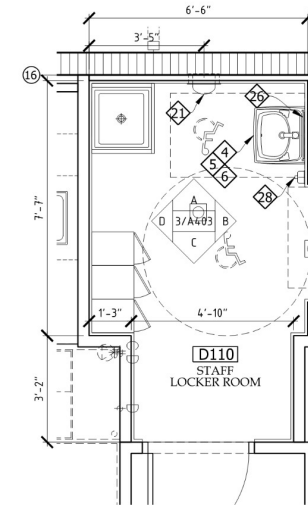
Tag	Qty	Product	Len	Cut Logic
LF				
	55 LF	Schltr Schltr R/L		
SF				
	644 SF	Adhsv WallTileMastic		
	669 SF	WallTile CT-1		



#D112A
RESTROOM ELEVATION 3
10'-8" 5'-4" 2'-8" 0 A404
SCALE: 3/8" = 1'-0"



#D110
LOCKER ROOM ELEVATION 2
10'-8" 5'-4" 2'-8" 0 A404



Somerset Academy PSL
725 NW California Blvd
Port St. Lucie, Florida 34986

A404 IntrElevtnRestRm Bldg D

Estimator: -Estimator-

Tracking: -Tracking-